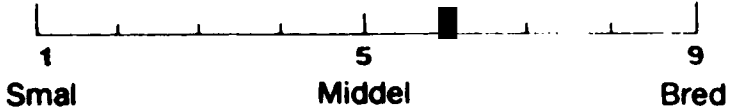
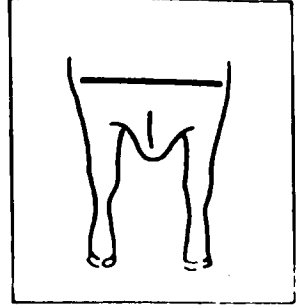
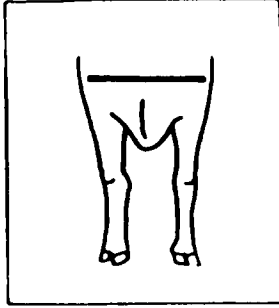
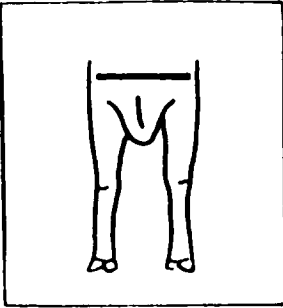


1

BREDDE AF BOV

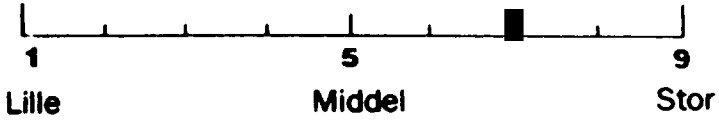
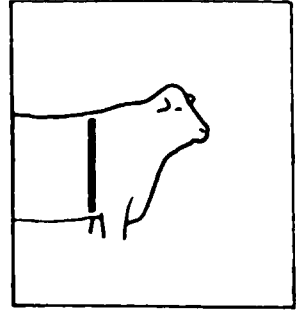
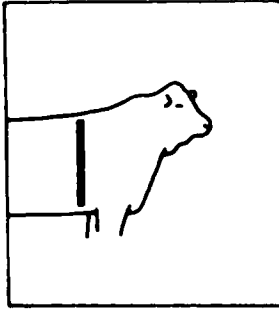
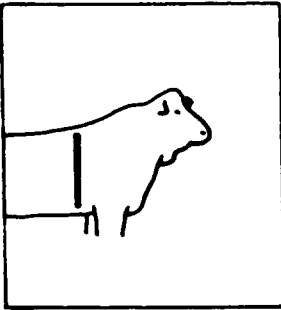
Width of foreend



2

BRYSTDYBDE

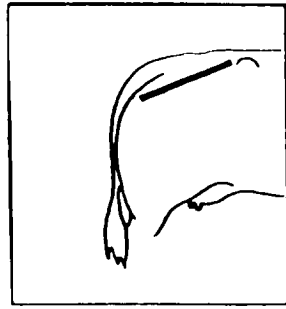
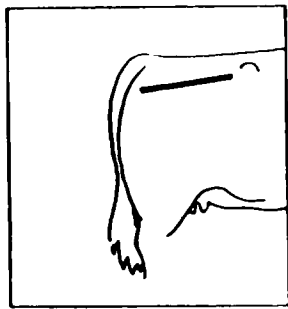
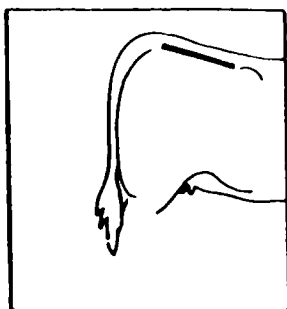
Depth of crest



4 Optimum størrelse = 7 - Optimum size = 7

5 Helhed = 9 - general appearance = 9

8 **KRYDSHÆLDNING** Rump angle

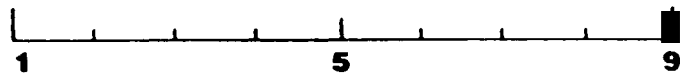
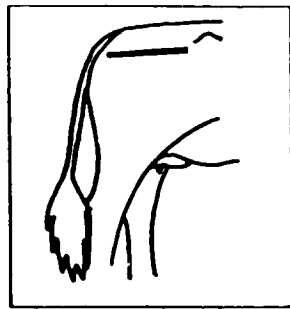
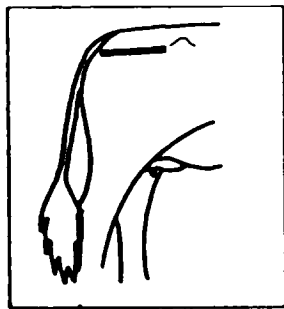
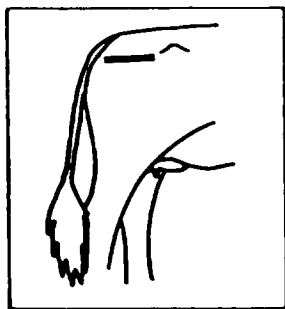


Opsvejet

Middel

Hældende

9 **KRYDSLÆNGDE** Length of rump

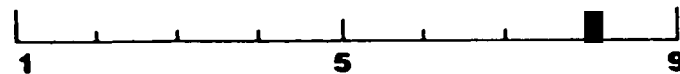
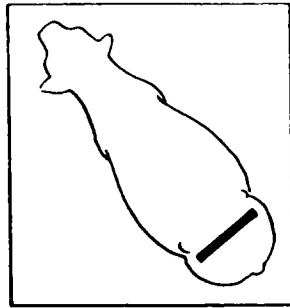
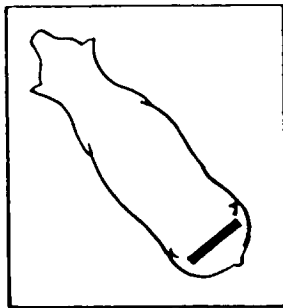
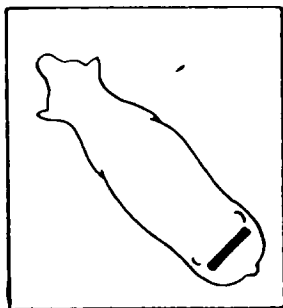


Kort

Middel

Langt

10 **KRYDSBREDDE** Width of rump



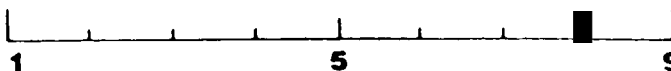
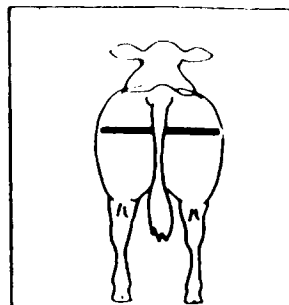
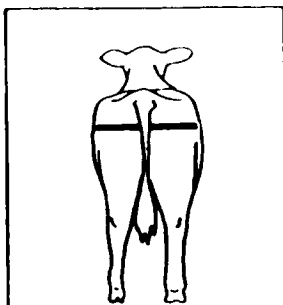
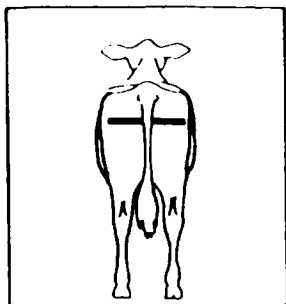
Smalt

Middel

Bredt

11 LÅRBREDDER

Width of thighs



1

5

9

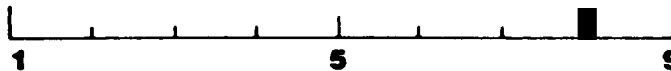
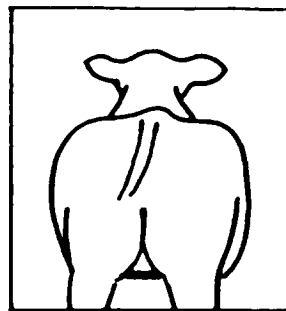
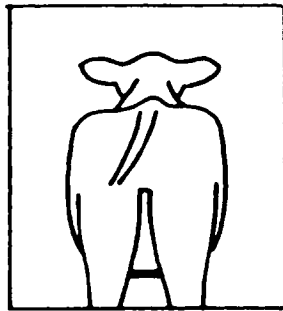
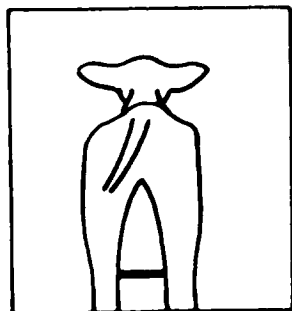
Smal

Middel

Bred

12 INDERLÅR

Inside of thighs



1

5

9

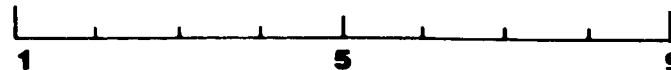
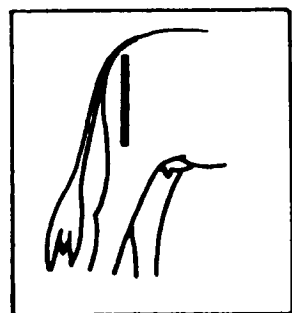
Manglende

Middel

Fyldig

13 LÅRDYBDE

Depth of thighs



1

5

9

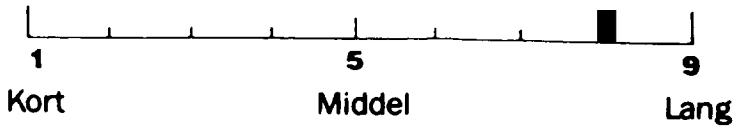
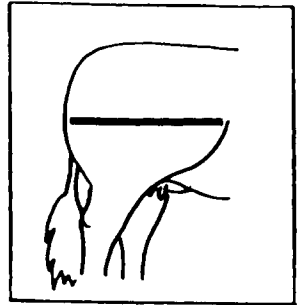
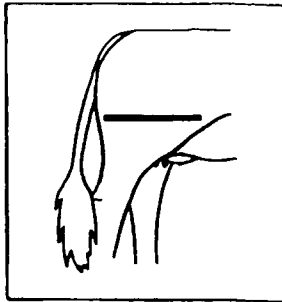
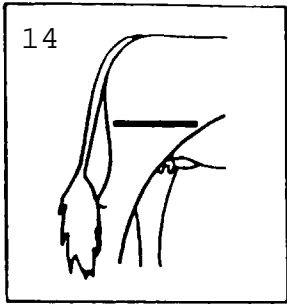
Korte

Middel

Dybe

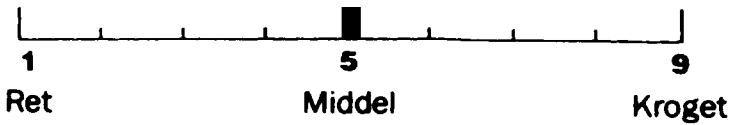
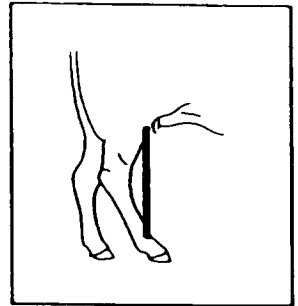
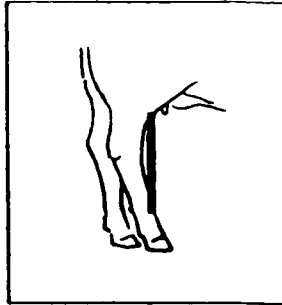
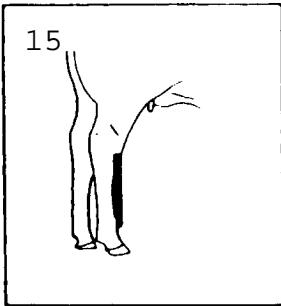
LÄRFYLDE

Muscularity of thighs (side view)



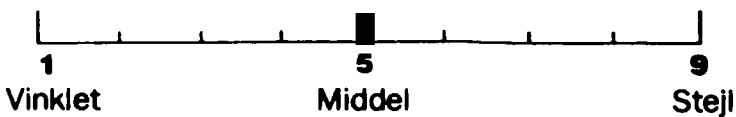
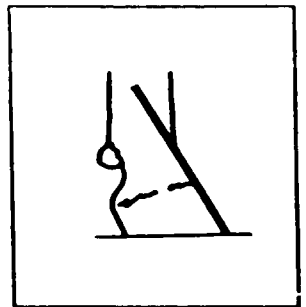
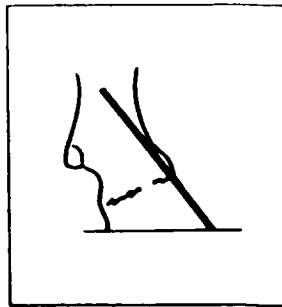
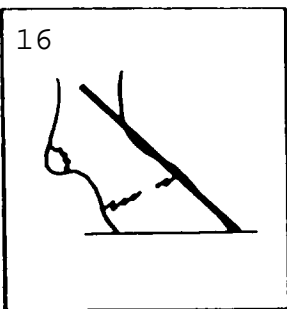
HASEVINKEL

Rear legs (side view)



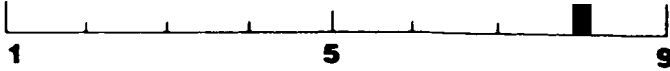
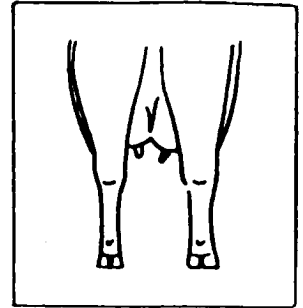
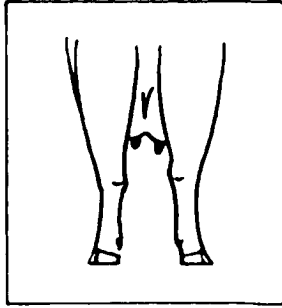
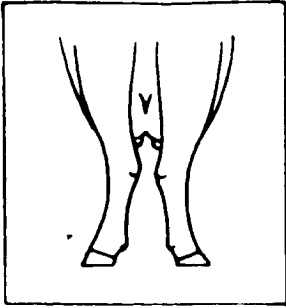
KODEVINKEL

Angle of pastern (side view)



17 HASESTILLING

Rear legs (rear view)



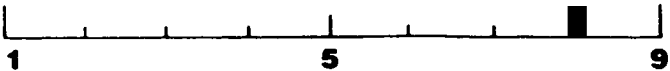
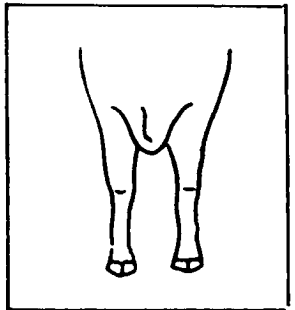
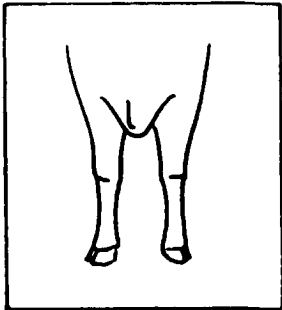
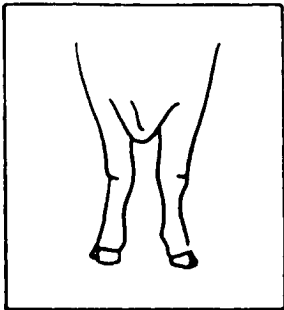
1 Tætstillede

5 Middel

9 Parallele

18 FORSTILLING

Forelegs (front view)



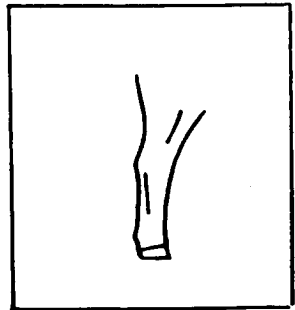
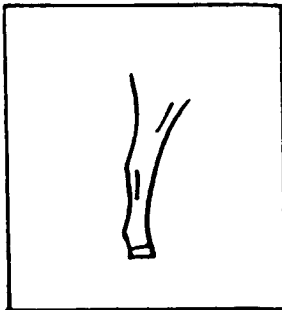
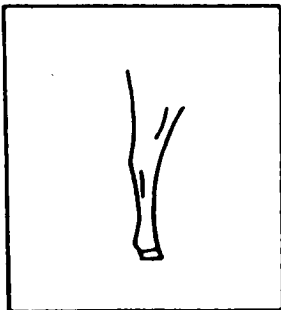
1 Udadrejede

5 Middel

9 Parallele

19 KNOGLEBYGNING

Bone quality



1 Fin

5 Middel

9 Gro